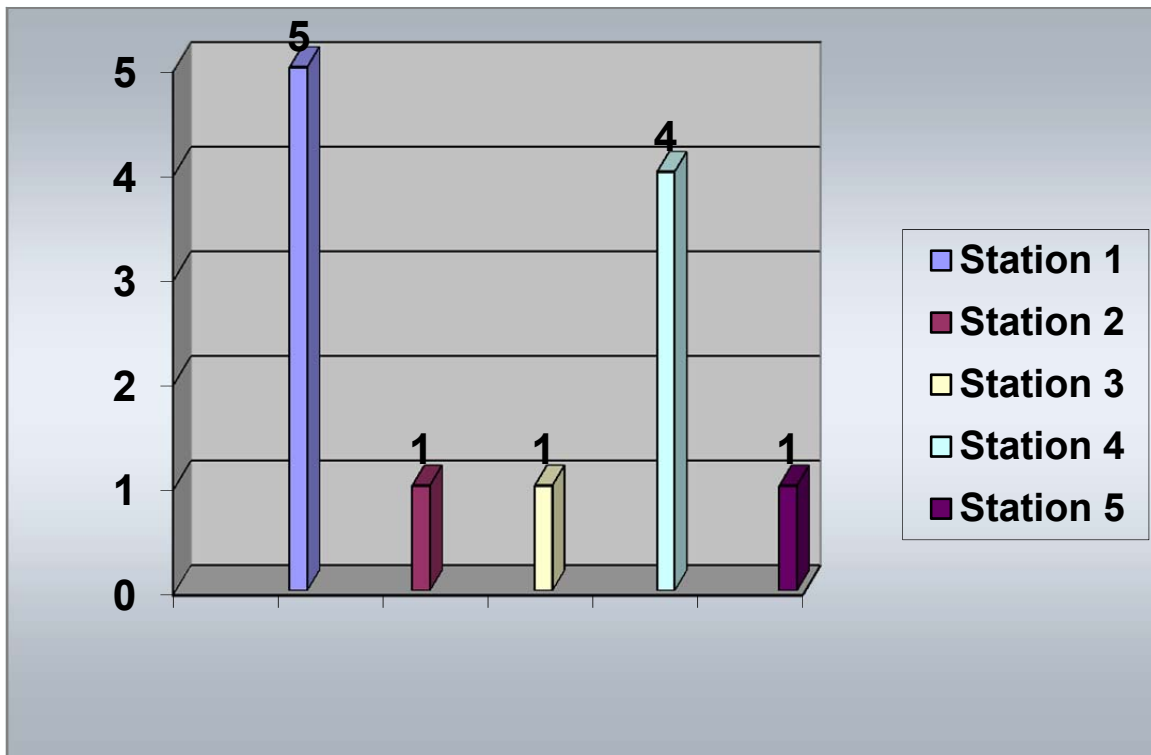


Overdose Calls by Station

April 2016



Station 1 Station 2 Station 3 Station 4 Station 5

5

1

1

4

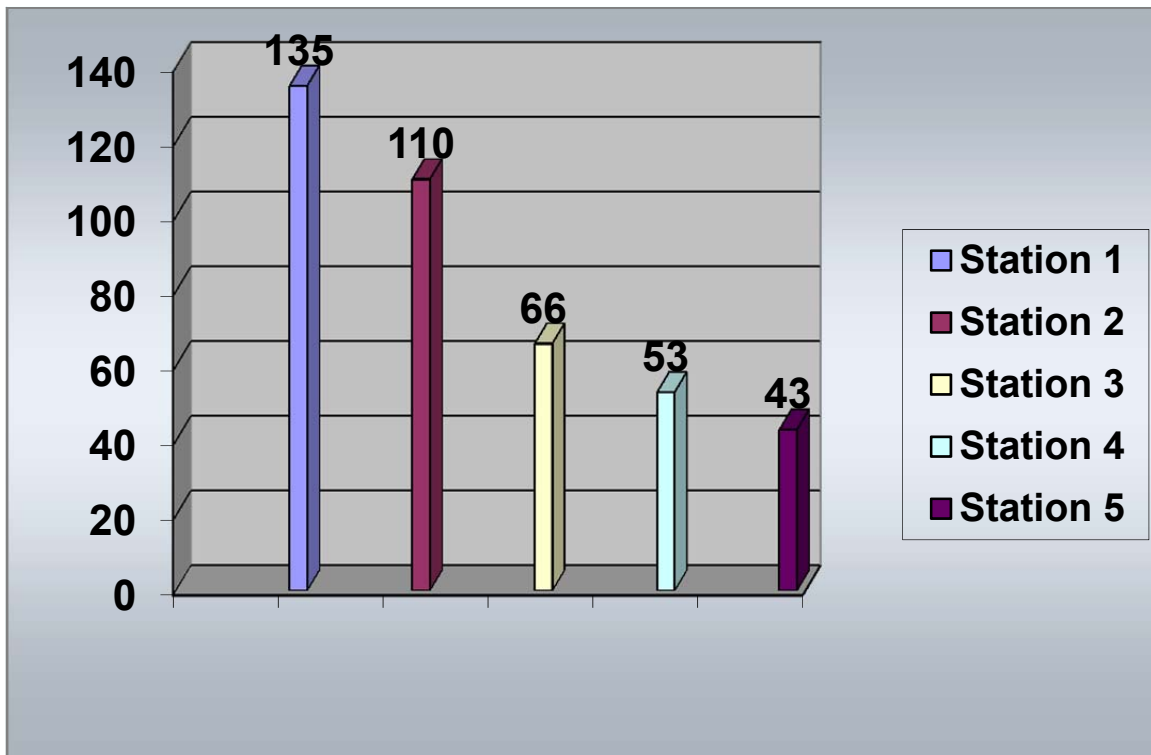
1

Total Overdose Calls for April 2016

12

Calls by Station

April 2016



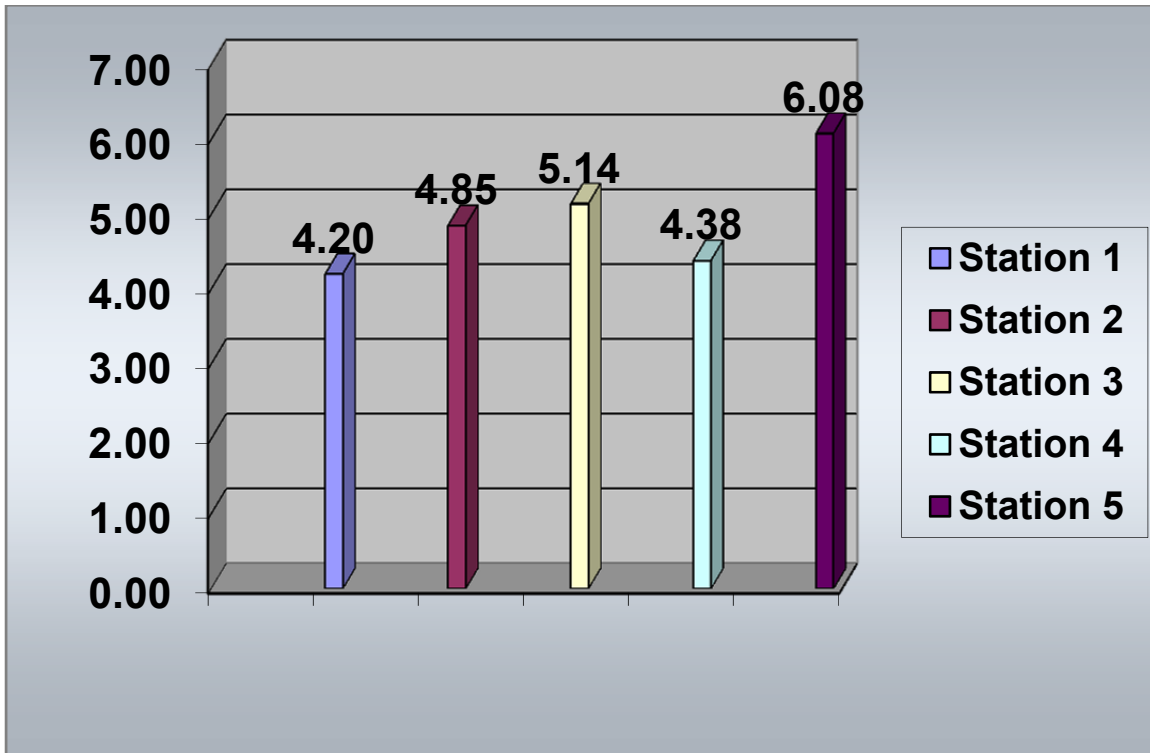
<i>Station 1</i>	<i>Station 2</i>	<i>Station 3</i>	<i>Station 4</i>	<i>Station 5</i>
135	110	66	53	43

Total Calls for April 2016

407

Response Times by Station In Minutes

April 2016



Station 1 Station 2 Station 3 Station 4 Station 5

4.20

4.85

5.14

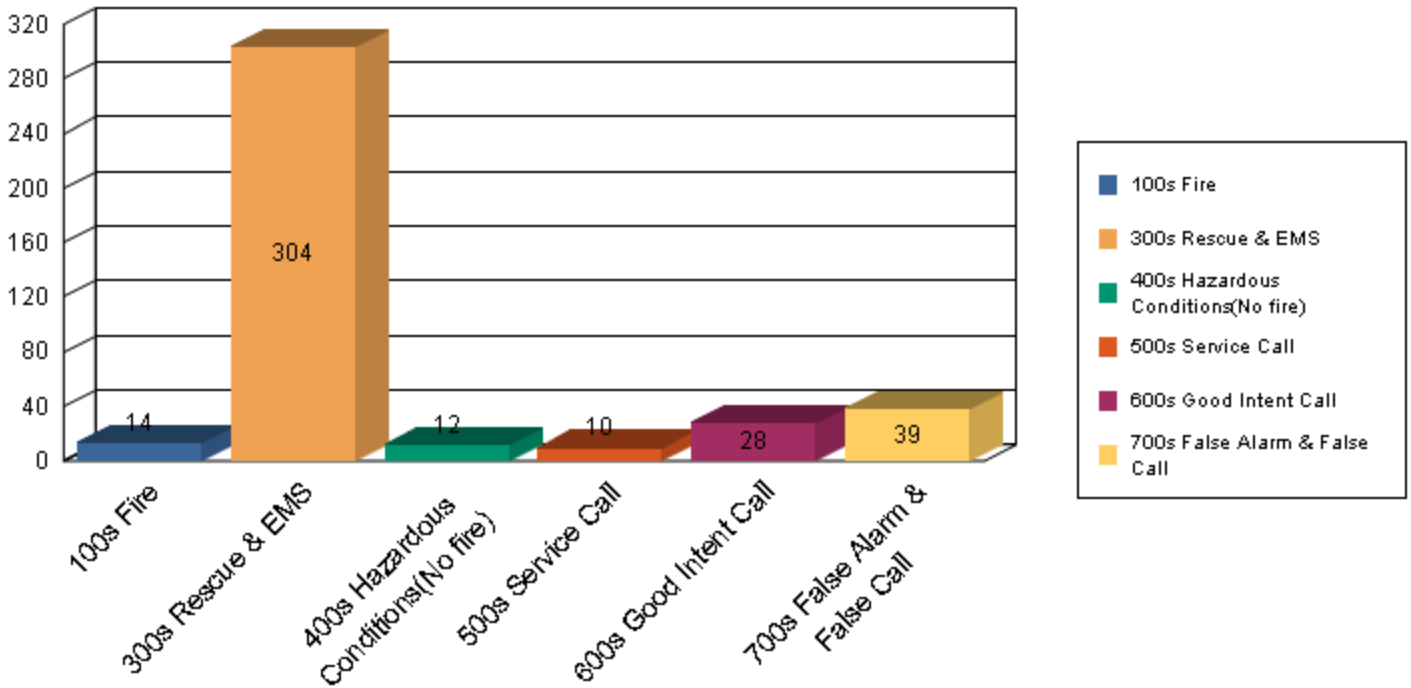
4.38

6.08

Total Average Response Time for April 2016

4.74 Minutes

April 2016



Graphed Items are sorted by Incident Type

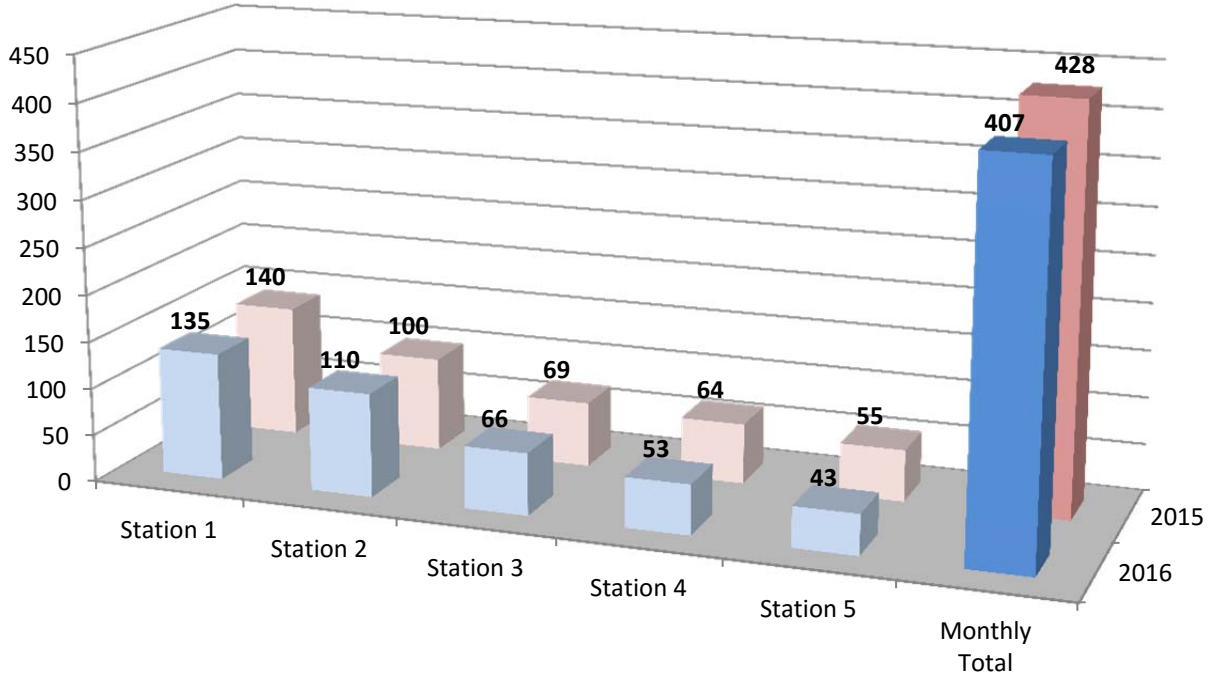
Type Of Incident:	Total Of Incidents:	Percentage Value:
100 Series-Fire	14	3.44%
300 Series-Rescue & EMS	304	74.69%
400 Series-Hazardous Conditions (No fire)	12	2.95%
500 Series-Service Call	10	2.46%
600 Series-Good Intent Call	28	6.88%
700 Series-False Alarm & False Call	39	9.58%

Grand Total: 407

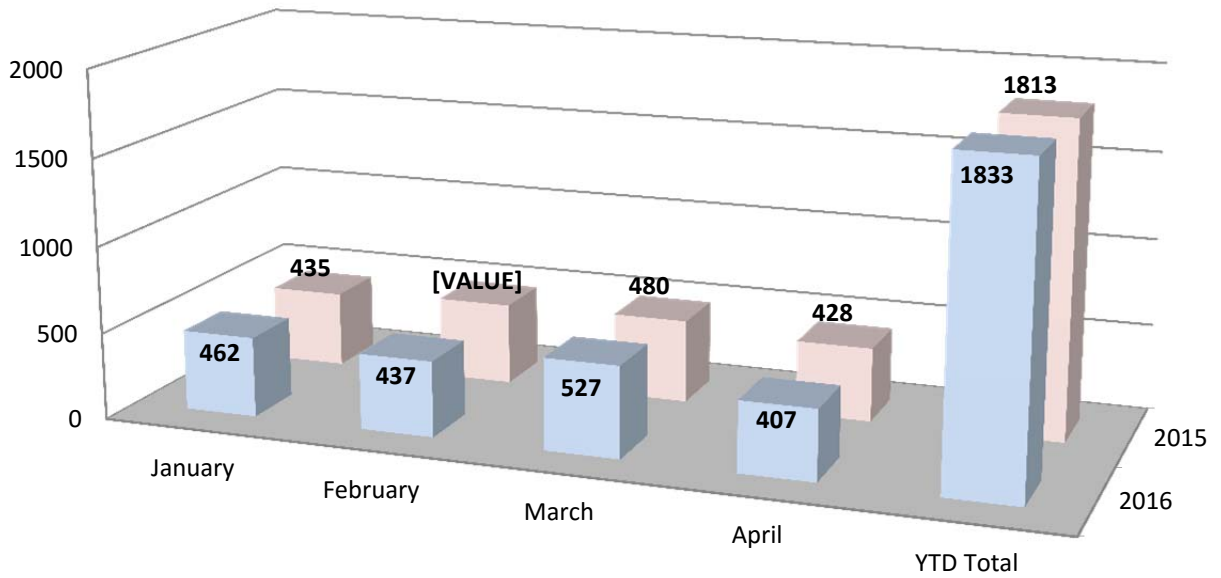
Type Of Incident Most Frequent: 300 Series-Rescue & EMS

Print Date: 5/3/2016

April 2015/2016 Call Volume Comparison (By Station)



YTD 2015/2016 Call Volume Comparison (District)



SOUTHERN MANATEE FIRE & RESCUE DISTRICT

OPERATIONS DIVISION

Monthly Activities Report for: April 2016

EMERGENCY INCIDENT RESPONSES	MONTH	2015 Totals
<u><i>Type of Call</i></u>		
100 Series - Fire	14	74
* <i>Structure Fire</i>	3	
* <i>Vehicle Fire</i>	6	
* <i>Brush Fire</i>	2	
* <i>Other Fire</i>	3	
200 Series - Explosion	0	1
300 Series - Rescue & EMS	304	1,304
* <i>EMS</i>	249	
* <i>Rescue</i>	55	
400 Series - Hazardous Conditions (No fire)	12	55
500 Series - Service Call	10	58
600 Series - Good Intent Calls	28	145
700 Series - False Alarm & False Call	39	196
800 Series - Severe Weather & Natural Disasters	0	0
900 Series - Special Type	0	0
TOTAL CALLS	407	1,833
Total Calls - 2015	428	1,813
Percentage Increase/Decrease 2015 to 2016	-4.9%	1.1%
Average Responses Per Day	13.6	15.1
Value of Property Saved	\$172,070	\$7,587,776
Fire Loss - 2016	\$63,004	\$439,898
Fire Loss - 2015	\$213,606	\$403,807
Percentage Increase/Decrease 2015 to 2016	-70.5%	8.9%

*Mutual & Automatic Aid Received: 4 calls

*Mutual & Automatic Aid Given: 4 calls

Southern Manatee Fire & Rescue

Operations Division

Monthly Shift Activities Report

Month: April 2016

Shift: A - B - C

Battalion Chiefs: Gould Blanco Smith

TOTAL RUNS FOR YOUR SHIFT:

	A-shift	B-shift	C-shift	<u>Total</u>
HYDRANTS:				
Flowed	104	89	73	266
Painted	15	12	40	67
Retested	0	1	0	1
Markers Placed	10	0	20	30
TACTICAL SURVEYS:				
New	1	0	0	1
Revised	1	1	0	2
FIRE ALARM FOLLOW-UPS:				
	9	16	5	30
PUB ED PROGRAMS:				
	0	2	1	3
SMOKE DETECTORS INSTALLED:				
	1	1	0	2
EMPLOYEE EVALUATIONS:				
	0	0	0	0
SKILL EVALUATIONS:				
	0	2	0	2
RIDER/DRIVER CERT:				
	0	2	0	2

RIDER / DRIVER CERTS

<u>Date</u>	<u>Name</u>	<u>Type</u>	<u>Unit</u>
4/19/2016	Murphy	Driver	Engine 312
4/22/2016	Murphy	Driver	Engine 311

SKILL EVALUATIONS

<u>Date</u>	<u>Name</u>	<u>Test</u>
4/13/2016	Velazquez	3rd Class Practical Exam
4/13/2016	Murphy	Pump Operators Written Exam

EMPLOYEE EVALUATIONS

<u>Date</u>	<u>Name</u>
-------------	-------------

SPECIAL PROJECTS / ASSIGNMENTS

<u>Name</u>	<u>Project</u>	<u>Hours</u>
Burton	Safety Gear	10
Burton	Apparatus Committee	5
Chevalier	Sara Title III	2
Perry	FTO	25
Hylwa	Nozzles	2
Moonen	Haz Mat Suits	1
Sedgley	Haz Mat	1
DeHart	Cribbing	1
Foss	Run Reports	10
White	Flashlights	2
Connor	FirePro	3
Connor	CAD/FirePro Interface	4
Connor	March BOC EOM Report	4
Godden	Hose	3
Lambert	Rope Rescue	1
Lambert	Apparatus Committee	5
Lambert	Safety Committee	2
Gatanis	Website	10
Duquette	Fitness Coordinator	3
Hollins	Group Fitness	2
Hollins	Sewing	6
Garcia	Water Rescue	1
Garcia	Car seats	10
Garcia	Safe Kids	20
Garcia	Honor Guard	1
Tumolo	SCBA masks	1
Morgan	SCBA	2
Pratt	Thermal	6
Anderson	Hydrants	2
Keusch	Vol Association	0
Keusch	Report Writing	3
Keusch	Weight Equipment	2

Davis	Tacticals	10
Kaliher	Car Seats	1
Pratt	Hydrant Tags	1
Wojcik	CPR	20
Bonds	Maps	6
Sigfrid	Saws	1
Kaliher	FTO	30
Sperko	SEMS II	15
Ramer	Flow Equipment	4
Weissman	Hurst Equipment	2
McGinley	Fuel logs	1
Mc Ginley	Awards Committee	1
Ramer	Air chisels	2
Questionati	Detection	5
Pietsch	Fans	3
Carpenter	Tool Boxes	1
Bennett	Cones & Vests	2
Hodges	Lock out kits	1
Hodges	Safety Committee	4
Saxman	Cascade Unit	1
Bloski	Manatee Co. Fire Commisioners	1
Daughtrey	Manatee Co. Fire Commisioners	1
Burnett	Safety Committee	4
Burnett	Annual Station Safety Inspection	2
Gibson	Hand Tools	6
B Hodges	Ground Ladders	1
B Hodges	Run Reports	5
B Hodges	Car Seat Installs	2
Ryder	Apparatus Maintenance	12
Daughtrey	Apparatus Tires	4
Daughtrey	No Smoke Systems	1
D'Agostino	Uniforms	10
Ely	Uniform Assistant	5
Reisdorf	Gated Intakes	2
Hauck	Run reports	4
Snider	Group fitness	4
Smith	Truck checks	10
Murphy	Flag poles	1
Ely	Foam	2
Ranney	AED	6
Ranney	Rehab trailer	1
Thayer	CPR Renewals	16
Thayer	FTO	15
Bloski	MCHIT Training Officer	60
Naples	Radios	10
Eldridge	Extinguishers	2
McKeaver	Extractors	2
Lucas	Hosebed Covers	1

Prevention Activities Completed By Operations Division

Public Education Programs

<u>Date</u>	<u>Program</u>	<u>Location</u>	<u># of people</u>
4/23/2016	Truck Show	4536 53 Avenue East	3
4/4/2016	Fire Station Tour	Station 3	12

Smoke Detector Installations

<u>Date</u>	<u>Address</u>	<u>Blitz</u>	<u>On call</u>	<u>FPB Request</u>
4/3/2016	5707 45 Street East Lot #177		X	
4/7/2016	1612 51 Ave E		X	

Fire Alarm Follow up

<u>Date</u>	<u>Address</u>	<u>Hours</u>	<u>Completed Y/N</u>
4/5/2016	3503 1 ST E	0.25	Y
4/5/2016	7565 Commerce Ct.	0.25	N
4/5/2016	5700 24 ST E	0.25	Y
4/17/2016	6926 15 ST E	0.25	Y
4/3/2016	8459 Cooper Creek	0.25	N
4/15/2016	6612 26 Ct E	0.25	N
4/15/2016	6926 15 St E	0.25	N
4/6/2016	1515 26 Avenue East	0.5	N
4/18/2016	2303 1 Street East	0.5	N
4/21/2016	2303 1 Street East	0.5	N
4/21/2016	2100 47 Terrace East	0.5	N
4/3/2016	8453 Cooper Creek Blvd.	0.5	N
4/9/2016	5475 University Parkway	0.5	Y
4/18/2016	8335 University Pky	0.25	N
4/4/2016	7450 26 Ct E	0.25	N
4/4/2016	7425 16 St E	0.25	Y
4/4/2016	7565 Commerce Ct	0.25	N
4/4/2016	8453 Cooper Creek Blvd	0.25	N
4/7/2016	2150 Whitfield Ave	0.25	Y
4/13/2016	6616 26 Ct E	0.25	N
4/16/2016	6926 15 St E	0.25	N
4/16/2016	2100 47 Ter	0.25	N
4/16/2016	2303 1 St E	0.25	N
4/19/2016	8335 Lockwood Ridge Road	0.25	N
4/19/2016	6926 15 St E	0.25	N
4/16/2016	2911 53 Ave E	0.25	Y
4/25/2016	2100 47 Ter	0.25	Y
4/25/2016	2303 1 St E	0.25	N
4/22/2016	7501 15 St E	0.25	Y
4/22/2016	6503 15 St E	0.25	Y
4/27/2016	8419 Tuttle Ave	0.25	Y

Comparison of Yearly Calls by Station and Month

YEARLY CALLS BY MONTH - 2016

	Station 1	Station 2	Station 3	Station 4	Station 5	Monthly	YTD Total
January	167	101	76	72	46	462	462
February	134	117	64	78	44	437	899
March	171	140	79	82	55	527	1426
April	135	110	66	53	43	407	1833
May							
June							
July							
August							
September							
October							
November							
December							
						Grand Total	
Total	607	468	285	285	188	1833	

YEARLY CALLS BY MONTH - 2015

	Station 1	Station 2	Station 3	Station 4	Station 5	Monthly	YTD Total
January	172	95	62	68	38	435	435
February	155	125	53	76	61	470	905
March	161	124	71	68	56	480	1385
April	140	100	69	64	55	428	1813
May	172	109	66	80	35	462	2275
June	127	106	60	64	42	399	2674
July	179	118	51	66	37	451	3125
August	143	106	63	67	45	424	3549
September	162	118	56	61	31	428	3977
October	136	116	70	58	41	421	4398
November	141	100	58	79	42	420	4818
December	191	135	52	68	47	493	5311
						Grand Total	
Total	1879	1352	731	819	530	5311	