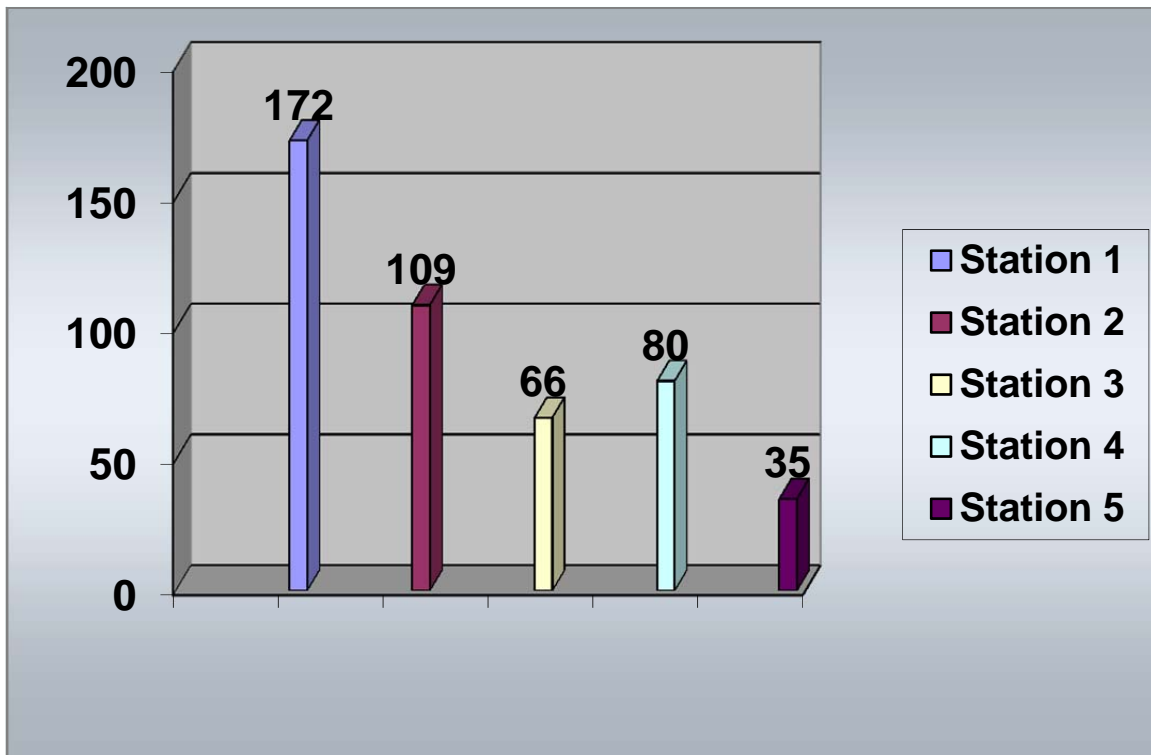


# Calls by Station

*May 2015*



*Station 1   Station 2   Station 3   Station 4   Station 5*

*172*

*109*

*66*

*80*

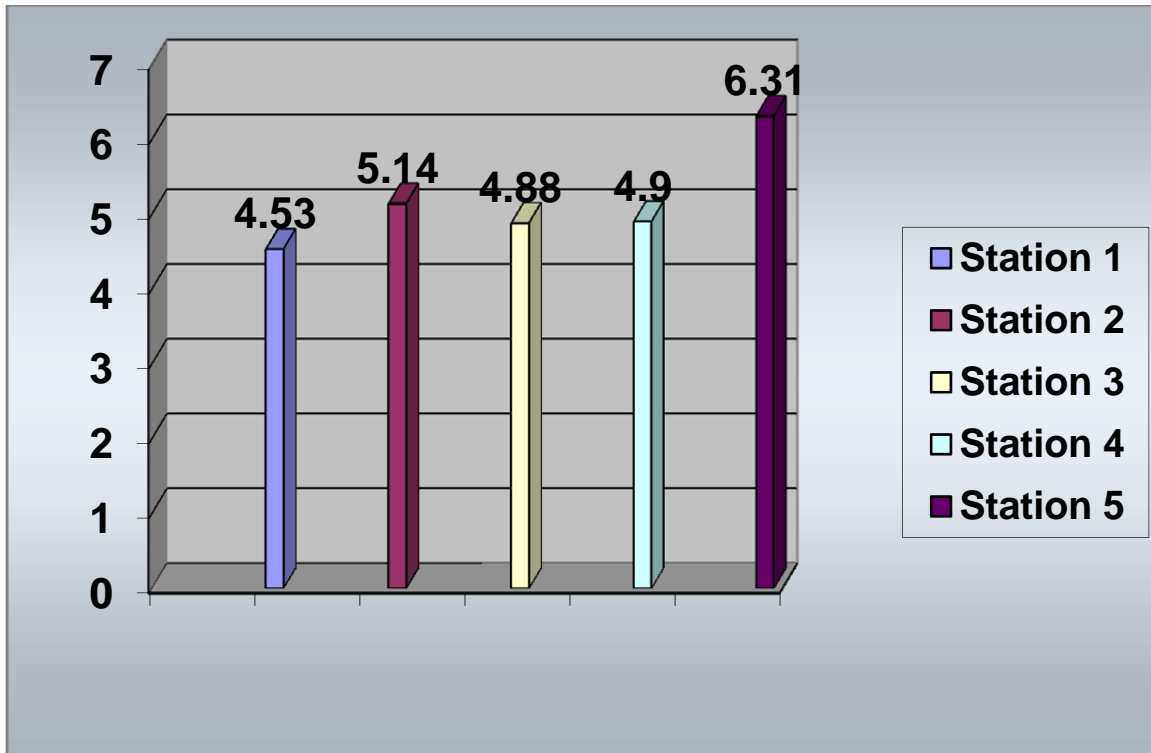
*35*

*Total Calls for May 2015*

*462*

# Response Times by Station In Minutes

*May 2015*



*Station 1   Station 2   Station 3   Station 4   Station 5*

*4.53*

*5.14*

*4.88*

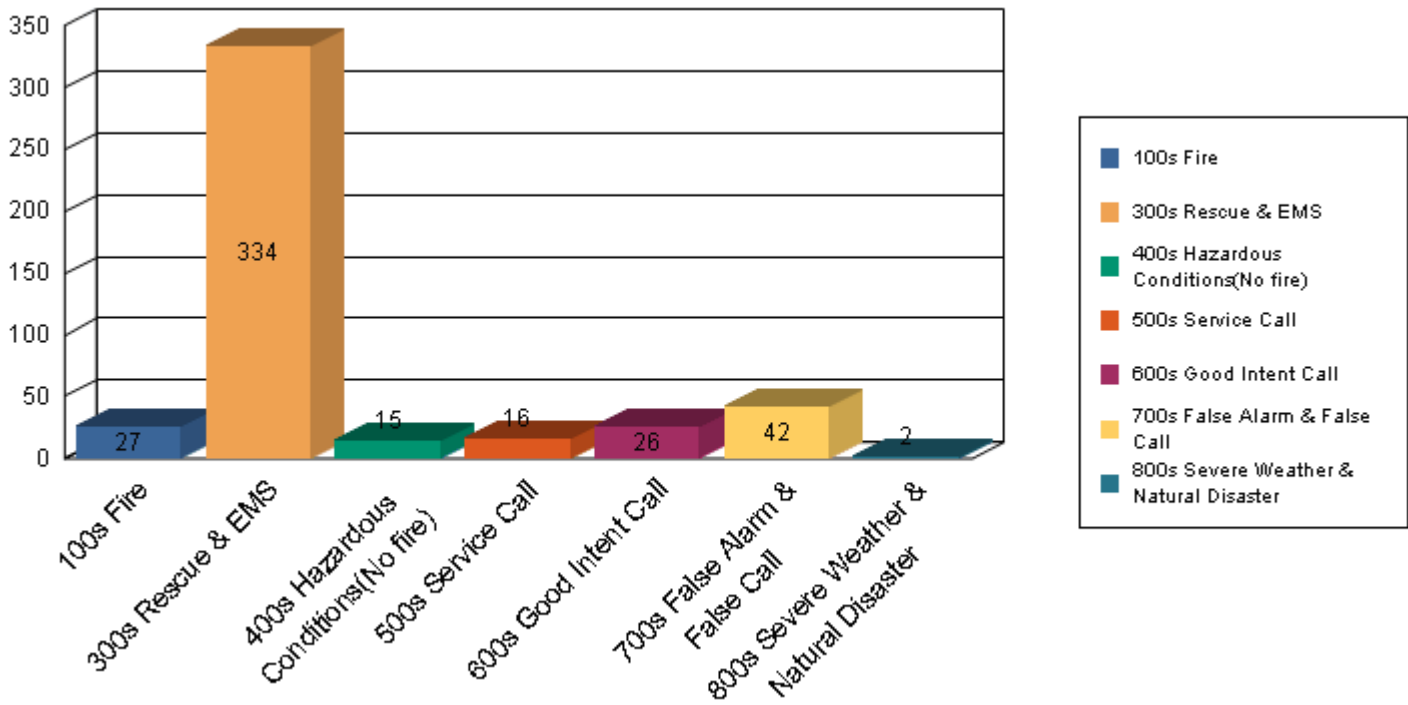
*4.90*

*6.31*

*Total Average Response Time for May 2015*

**4.92 Minutes**

May 2015



Graphed Items are sorted by Incident Type

**Type Of Incident:**

**Total Of Incidents:**

**Percentage Value:**

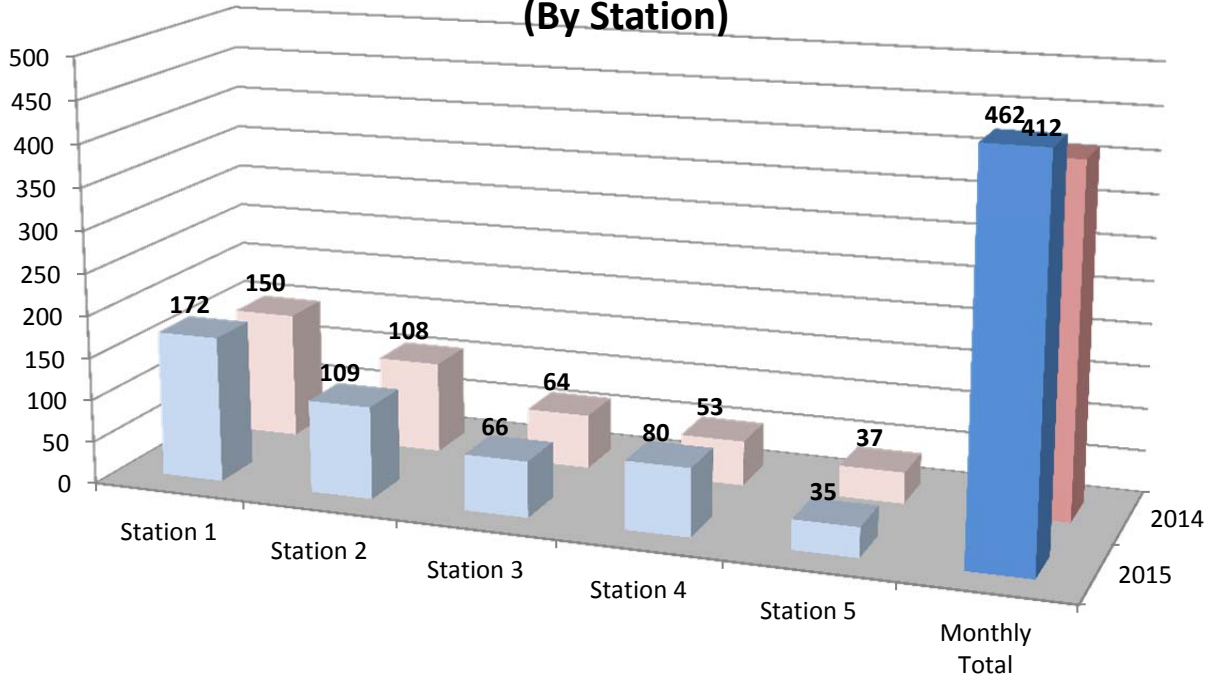
100 Series-Fire	27	5.84%
300 Series-Rescue & EMS	334	72.29%
400 Series-Hazardous Conditions(No fire)	15	3.25%
500 Series-Service Call	16	3.46%
600 Series-Good Intent Call	26	5.63%
700 Series-False Alarm & False Call	42	9.09%
800 Series-Severe Weather & Natural Disaster	2	0.43%

**Grand Total:** 462

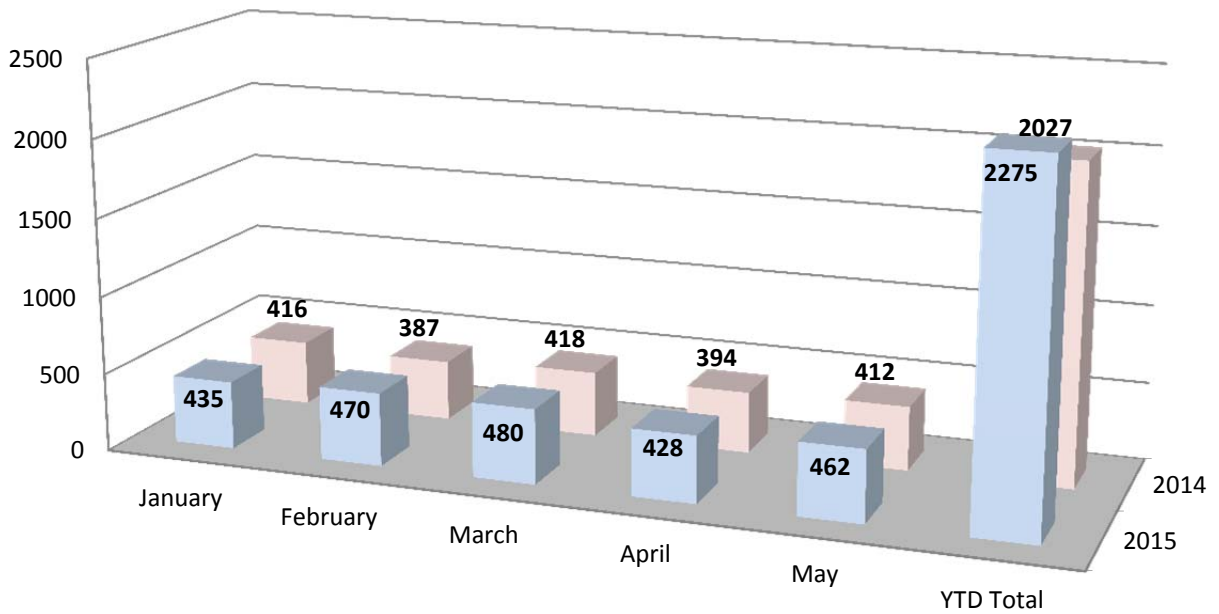
**Type Of Incident Most Frequent:** 300 Series-Rescue & EMS

Print Date: 6/2/2015

### May 2014/2015 Call Volume Comparison (By Station)



### YTD 2014/2015 Call Volume Comparison (District)



# SOUTHERN MANATEE FIRE & RESCUE DISTRICT

## OPERATIONS DIVISION

Monthly Activities Report for: May 2015

<b>EMERGENCY INCIDENT RESPONSES</b>	<b>MONTH</b>	<b>2015 Totals</b>
<u><i>Type of Call</i></u>		
100 Series - Fire	27	96
* <i>Structure Fire</i>	13	
* <i>Vehicle Fire</i>	7	
* <i>Brush Fire</i>	0	
* <i>Other Fire</i>	7	
200 Series - Explosion	0	4
300 Series - Rescue & EMS	334	1,693
* <i>EMS</i>	268	
* <i>Rescue</i>	66	
400 Series - Hazardous Conditions (No fire)	15	60
500 Series - Service Call	16	56
600 Series - Good Intent Calls	26	155
700 Series - False Alarm & False Call	42	206
800 Series - Severe Weather & Natural Disasters	2	4
900 Series - Special Type	0	1
	<b>462</b>	<b>2,275</b>
 Total Calls - 2014	 412	 2,027
Percentage Increase/Decrease 2014 to 2015	12.1%	12.2%
 Average Responses Per Day	 14.9	 15.1
 <b>Value of Property Saved</b>	 <b>\$1,723,783</b>	 <b>\$17,834,934</b>
 <b>Fire Loss - 2015</b>	 <b>\$465,427</b>	 <b>\$869,234</b>
Fire Loss - 2014	\$286,256	\$366,876
Percentage Increase/Decrease 2014 to 2015	62.6%	136.9%

\*Mutual & Automatic Aid Received: 8 calls

\*Mutual & Automatic Aid Given: 6 calls

# Southern Manatee Fire & Rescue

## Operations Division

### Monthly Shift Activities Report

Month: May 2015 Shift: A - B - C  
Battalion Chiefs: Gould Blanco Smith

#### TOTAL RUNS FOR YOUR SHIFT:

	A-shift	B-shift	C-shift	<u>Total</u>
<b>HYDRANTS:</b>				
Flowed	19	158	44	221
Painted	0	10	0	10
Retested	0	0	0	0
Markers Placed	0	0	0	0
<b>TACTICAL SURVEYS:</b>				
New	3	3	0	6
Revised	1	0	1	2
<b>FIRE ALARM FOLLOW-UPS:</b>				
	5	14	7	26
<b>PUB ED PROGRAMS:</b>				
	0	1	0	1
<b>SMOKE DETECTORS INSTALLED:</b>				
	3	6	0	9
<b>EMPLOYEE EVALUATIONS:</b>				
	0	0	0	0
<b>SKILL EVALUATIONS:</b>				
	12	6	0	12
<b>RIDER/DRIVER CERT:</b>				
	3	0	0	3

#### RIDER / DRIVER CERTS

<u>Date</u>	<u>Name</u>	<u>Type</u>	<u>Unit</u>
5/6/2015	Mike Murphy	Rider	E-9
5/18/2015	Mike Murphy	Rider	E-8
5/3/2015	Burghdurf	Rider	E-14

## SKILL EVALUATIONS

<u>Date</u>	<u>Name</u>	<u>Test</u>
5/18/2015	Mike Murphy	Fire Behavior & Ladders
5/27/2015	Mike Murphy	Extinguishers, Vent., Salvage & Protect. Sys
5/3/2015	Burghdurf	Extinguishers
5/6/2015	Burghdurf	Ventilation
5/9/2015	Burghdurf	Ladders, Rescue, Salvage, Protection Sys
5/4/2015	Jordan Valezquez	Water Supply
5/10/2015	Jordan Valezquez	Fire Behavior
5/10/2015	Jordan Valezquez	Fire Streams
5/10/2015	Jordan Valezquez	Extinguisher
5/13/2015	Jordan Valezquez	Ropes & Knots
5/19/2015	Jordan Valezquez	Forcible Entry

## SPECIAL PROJECTS / ASSIGNMENTS

<u>Name</u>	<u>Project</u>	<u>Hours</u>
Burton	Safety Gear	6
Connor	April BOC Report	5
Connor	Telestaff (advanced configuration)	7
Connor	FirePro	2
A-shift Sta 1	Misc. Hazmat	1
A-shift Sta 1	E-16 decal removal	20
White	Flashlights	1
Foss	Run Reports	10
Chevalier	Sara Title III	1
Hylwa	Nozzles	6
Lambert	Asset Inventory	10
Lambert	Safety Committee	2
Lambert	Rope Rescue	1
Duquette	Group Fitness	2
Gatanis	Website	10
Perry	FTO	30
Moore	Equipment Book	5
Ryder	Apparatus Maintenance	15
Burnett	Safety Committee	6
Hauck	Run Reports	10
Wernet	Hand Tools	0
Pierce	Medical	5
Daughtrey	Apparatus Tires	4
Daughtrey	No-Smoke Systems	1
Hodges B.	Ladder Maintenance	2
Reisdorf	Intakes	3
Naples	Radios	2
Lucas	Hose bed Covers	10
McKeaver	Extractors	2
Eldridge	Extinguishers	2
Thayer	B-Shift FTO	10
Ranney	AED Program	5
Ely	Foam	4
R. Smith	Truck Checks	10

Sperko	B-Shift Fitness	4
Snider	Medical Supplies	4
Gibson	Uniforms	3
Hollins	Group Fitness	4
Hollins	Sewing	3
Garcia	Water Rescue	2
Garcia	Car seats	1
Garcia	Safe Kids	5
Garcia	Honor Guard	4
Tumolo	SCBA masks	3
Bloski	MCHIT Training Officer	33
Morgan	SCBA	3
Anderson	Hydrants	12
Keusch	Report Writing	8
Keusch	Weight Equipment	2
Kaliher	Tacticals	4
Kaliher	Car Seats	1
Pratt	Thermal Imagers	6
Garcia	Honor Guard	2
Wojcik	Car Seats	1
Sigfrid	Saws	4
Kaliher	FTO	20
Bonds	Flow Equipment	2
Weissman	Hydraulic Equipment	1
McGinley	Fuel logs	2
Mc Ginley	Vol Association	1
Questionati	Detection	2
Pietsch	Fans	1
Carpenter	Tool Boxes	1
Bennett	Cones & Vests	1
Hodges S.	Lock out kits	2
C-shift Sta 1	Hazmat truck	16
Pratt	Hydrant Tags	1

**Public Education Programs**

<b><u>Date</u></b>	<b><u>Program</u></b>	<b><u>Location</u></b>	<b><u># of people</u></b>
5/25/2015	Truck Show	8000 Cooper Creek	75

**Smoke Detector Installations**

<b><u>Date</u></b>	<b><u>Address</u></b>	<b><u>Blitz</u></b>	<b><u>On call</u></b>	<b><u>FPB Request</u></b>
5/15/2015	5816 5 St E		2	
5/15/2015	5820 5 St E		1	
5/5/2015	1323 54 Ave E		1	
5/5/2015	1321 54 Ave E		1	
5/5/2015	1331 54 Ave E		1	
5/5/2015	1325 54 Ave E		1	
5/10/2015	1116 60 Ave Dr E		1	

**Fire Alarm Follow up**

<b><u>Date</u></b>	<b><u>Address</u></b>	<b><u>Hours</u></b>	<b><u>Completed Y/N</u></b>
5/18/2015	5201 33 St E	0.25	Y



5/15/2015	1209 44 Ave E	0.25	N
5/18/2015	7625 Matoka Rd	0.25	Y
5/9/2015	2911 53 Ave E	0.5	N
5/18/2015	2911 53 Ave E	0.5	N
5/4/2015	2303 1 St E	0.25	N
5/4/2015	5627 9 St E	0.25	Y
5/10/2015	8251 15 St E	0.25	N
5/13/2015	2224 72 Terr E	0.25	N
5/13/2015	6320 15 St E	0.25	N
5/22/2015	2240 72 Terr E	0.25	N
5/25/2015	5214 22 St Ct E	0.25	N
5/25/2015	2240 72 Terr E	0.25	N
5/19/2015	8471 Cooper Creek	0.25	Y
5/19/2015	8471 Cooper Creek	0.25	Y
5/7/2015	7600 Lookwood Ridge	0.25	Y
5/16/2015	2875 University Pkwy	0.25	N
5/22/2015	4521 Summer Cove Dr	0.25	Y
5/28/2015	1755 University Pkwy W	0.25	Y
5/8/2015	2911 53 Ave E	0.25	N
5/8/2015	4278 53 Ave E	0.25	Y
5/14/2015	1209 44 Ave E	0.25	N
5/20/2015	507 26 Ave E	0.25	N
5/26/2015	1755 University Pkwy	0.25	N
5/26/2015	5214 22 St Ct E	0.25	Y
5/26/2015	2240 72 Ct E	0.25	N

# Comparison of Yearly Calls by Station and Month

## YEARLY CALLS BY MONTH - 2015

	Station 1	Station 2	Station 3	Station 4	Station 5	Monthly	YTD Total
January	172	95	62	68	38	<b>435</b>	435
February	155	125	53	76	61	<b>470</b>	905
March	161	124	71	68	56	<b>480</b>	1385
April	140	100	69	64	55	<b>428</b>	1813
May	172	109	66	80	35	<b>462</b>	2275
June							
July							
August							
September							
October							
November							
December							
						<b>Grand Total</b>	
<b>Total</b>	<b>800</b>	<b>553</b>	<b>321</b>	<b>356</b>	<b>245</b>	<b>2275</b>	

## YEARLY CALLS BY MONTH - 2014

	Station 1	Station 2	Station 3	Station 4	Station 5	Monthly	YTD Total
January	151	107	63	45	50	<b>416</b>	416
February	140	97	59	58	33	<b>387</b>	803
March	143	124	68	54	29	<b>418</b>	1221
April	127	123	57	54	33	<b>394</b>	1615
May	150	108	64	53	37	<b>412</b>	2027
June	144	84	57	50	28	<b>363</b>	2390
July	129	94	54	52	32	<b>361</b>	2751
August	153	102	61	54	35	<b>405</b>	3156
September	135	88	73	59	31	<b>386</b>	3542
October	145	104	51	51	24	<b>375</b>	3917
November	163	102	60	50	55	<b>430</b>	4347
December	174	109	79	69	39	<b>470</b>	4817
						<b>Grand Total</b>	
<b>Total</b>	<b>1754</b>	<b>1242</b>	<b>746</b>	<b>649</b>	<b>426</b>	<b>4817</b>	