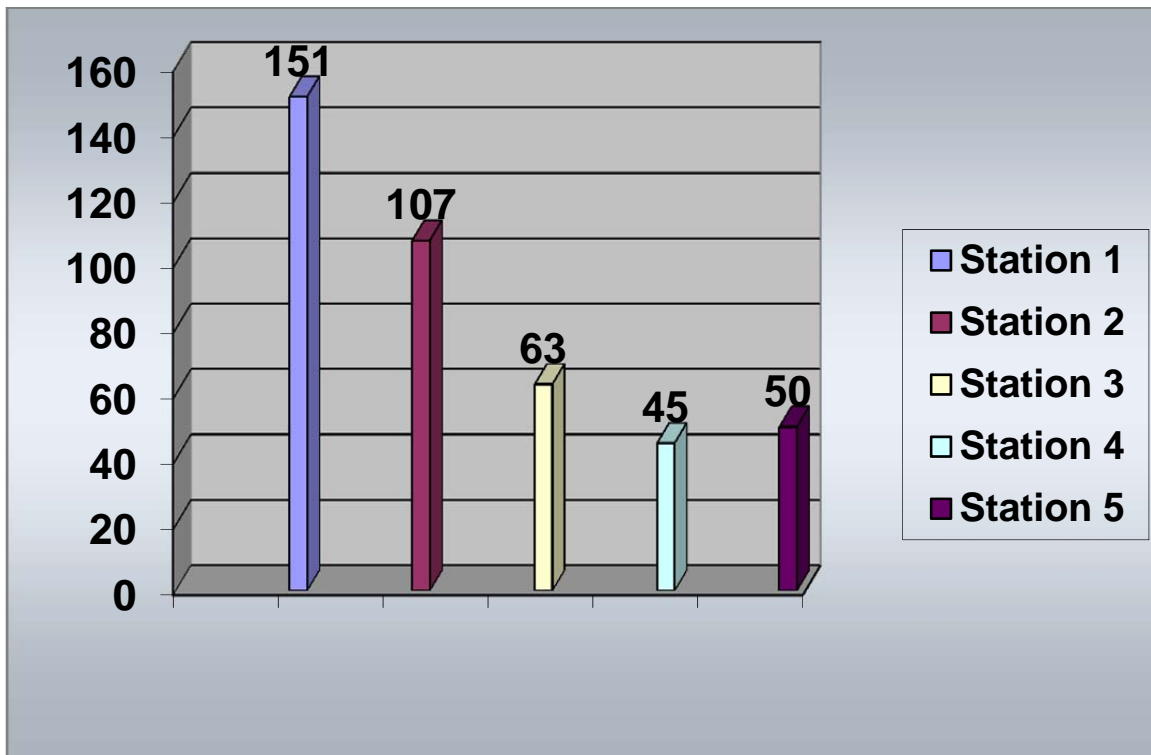


# Calls by Station

*January 2014*



*Station 1   Station 2   Station 3   Station 4   Station 5*

151

107

63

45

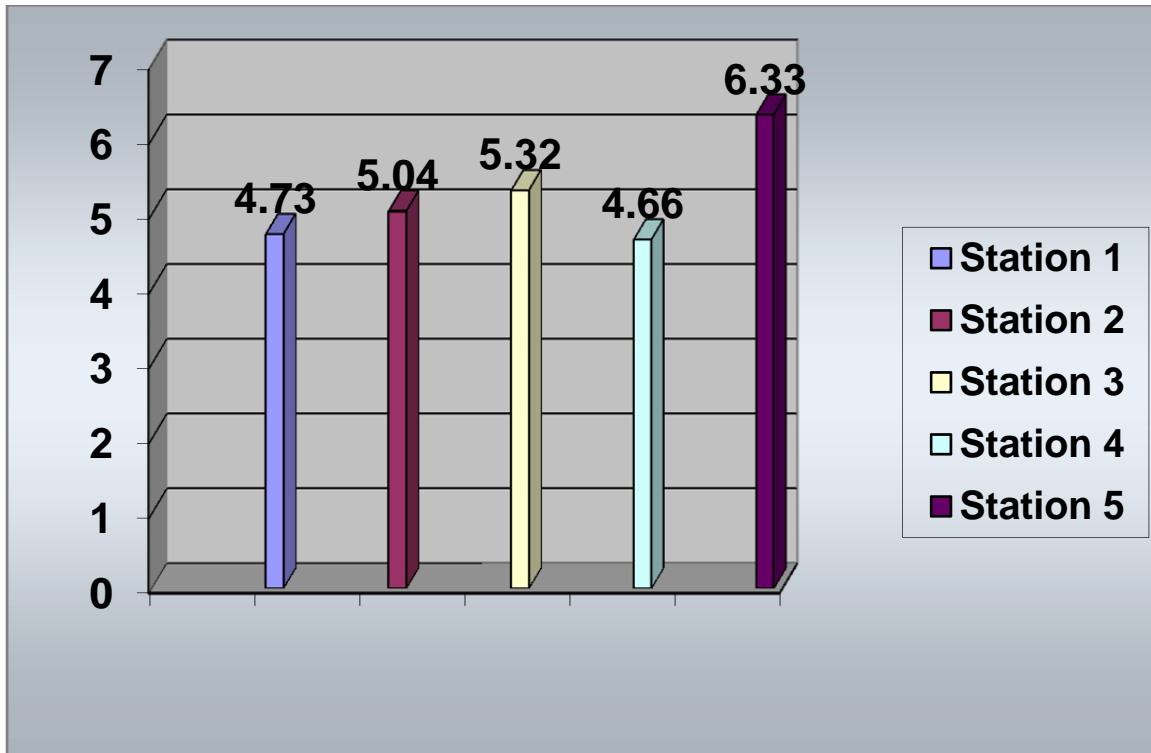
50

*Total Calls for January 2014*

**416**

# Response Times by Station In Minutes

*January 2014*



*Station 1   Station 2   Station 3   Station 4   Station 5*

*4.73*

*5.04*

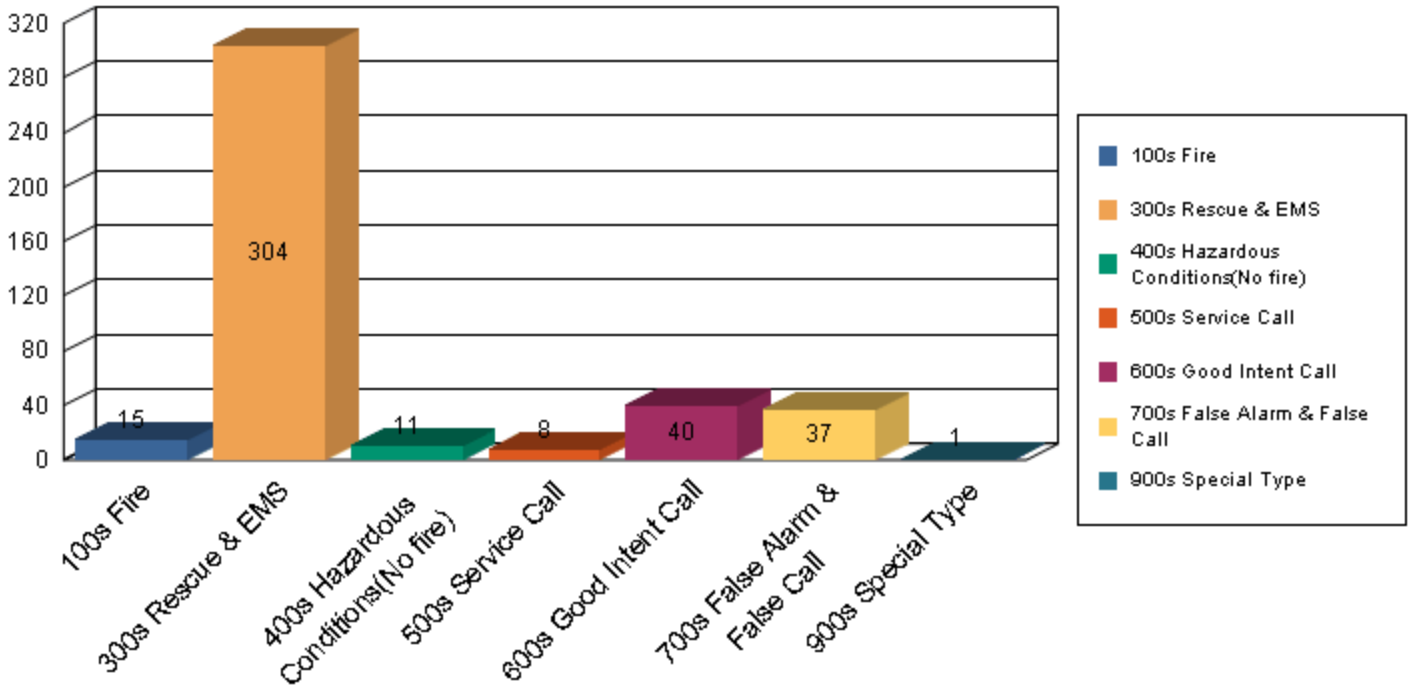
*5.32*

*4.66*

*6.33*

*Total Average Response Time for January 2014*

**5.21 Minutes**



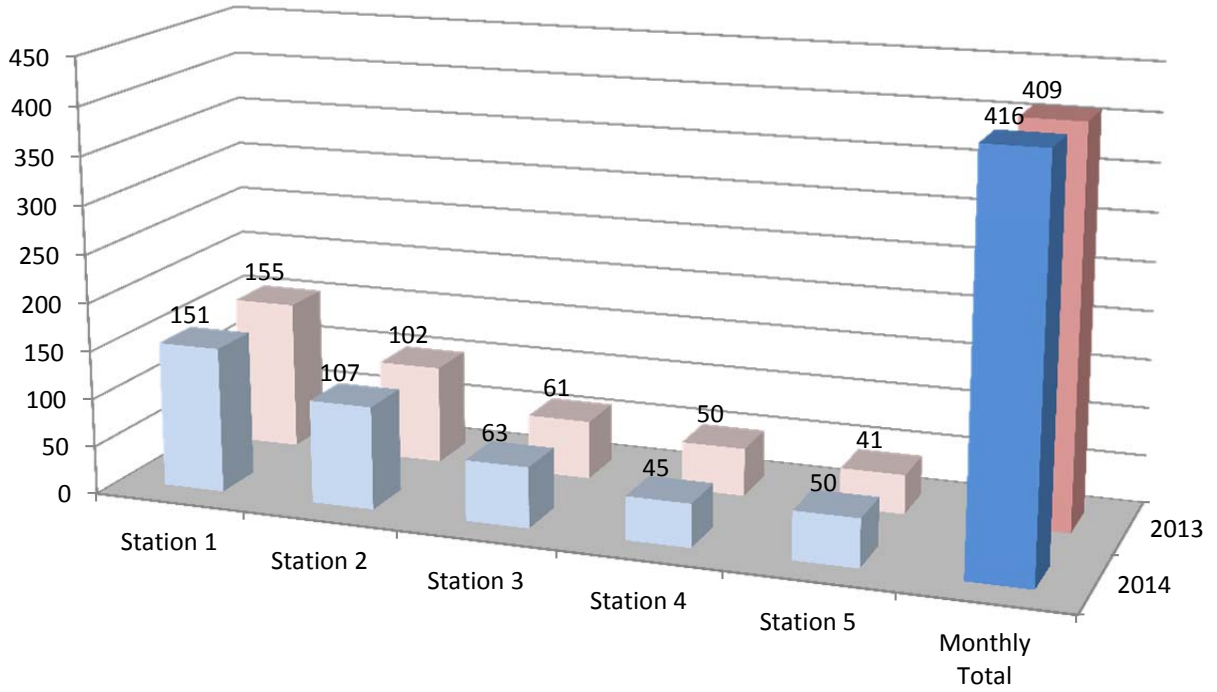
Graphed Items are sorted by Incident Type

| Type Of Incident:                        | Total Of Incidents: | Percentage Value: |
|--|---------------------|-------------------|
| 100 Series-Fire                          | 15                  | 3.61%             |
| 300 Series-Rescue & EMS                  | 304                 | 73.08%            |
| 400 Series-Hazardous Conditions(No fire) | 11                  | 2.64%             |
| 500 Series-Service Call                  | 8                   | 1.92%             |
| 600 Series-Good Intent Call              | 40                  | 9.62%             |
| 700 Series-False Alarm & False Call      | 37                  | 8.89%             |
| 900 Series-Special Type                  | 1                   | 0.24%             |

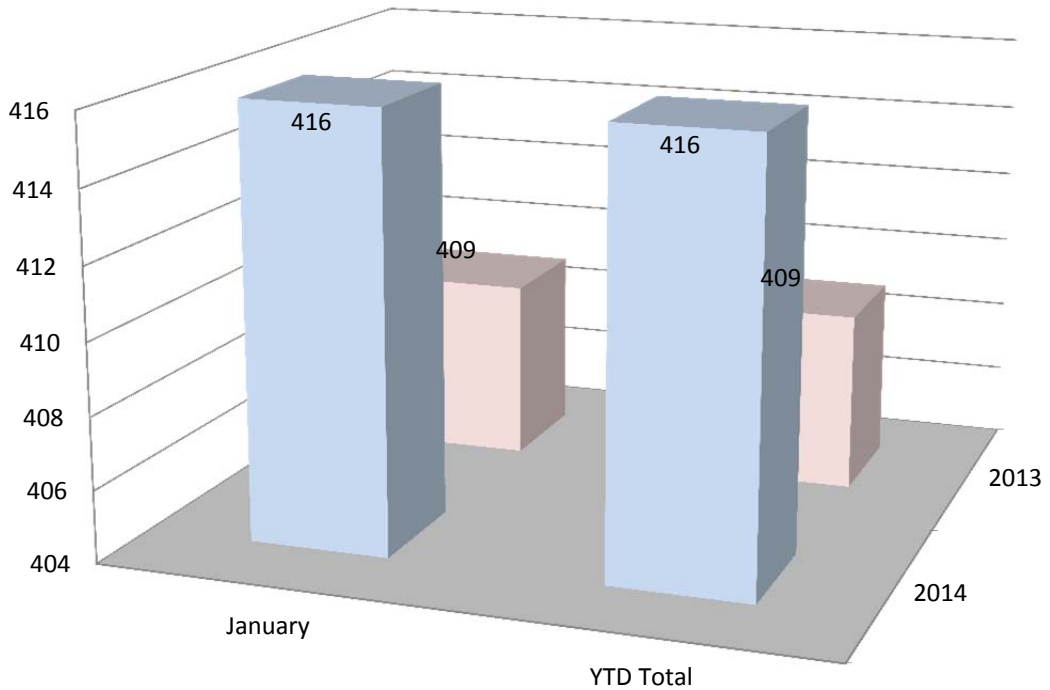
Grand Total: 416

Type Of Incident Most Frequent: 300 Series-Rescue & EMS

### January 2013/2014 Call Volume Comparison (By Station)



### YTD 2013/2014 Call Volume Comparison (District)



# SOUTHERN MANATEE FIRE & RESCUE DISTRICT

## OPERATIONS DIVISION

Monthly Activities Report for: January 2014

| <b>EMERGENCY INCIDENT RESPONSES</b>             | <b>MONTH</b>     | <b>2014 Totals</b> |
|---|------------------|--------------------|
| <u><i>Type of Call</i></u>                      |                  |                    |
| 100 Series - Fire                               | 15               | 15                 |
| * <i>Structure Fire</i>                         | 4                |                    |
| * <i>Vehicle Fire</i>                           | 2                |                    |
| * <i>Brush Fire</i>                             | 0                |                    |
| * <i>Other Fire</i>                             | 9                |                    |
| 200 Series - Explosion                          | 0                | 0                  |
| 300 Series - Rescue & EMS                       | 304              | 304                |
| * <i>EMS</i>                                    | 248              |                    |
| * <i>Rescue</i>                                 | 56               |                    |
| 400 Series - Hazardous Conditions (No fire)     | 11               | 11                 |
| 500 Series - Service Call                       | 8                | 8                  |
| 600 Series - Good Intent Calls                  | 40               | 40                 |
| 700 Series - False Alarm & False Call           | 37               | 37                 |
| 800 Series - Severe Weather & Natural Disasters | 0                | 0                  |
| 900 Series - Special Type                       | 1                | 1                  |
| <b>TOTAL CALLS</b>                              | <b>416</b>       | <b>416</b>         |
| Total Calls - 2013                              | 409              | 409                |
| Percentage Increase/Decrease 2012 to 2013       | 1.7%             | 1.7%               |
| Average Responses Per Day                       | 13.4             | 13.4               |
| <b>Value of Property Saved</b>                  | <b>\$728,175</b> | <b>\$728,175</b>   |
| <b>Fire Loss - 2014</b>                         | <b>\$12,605</b>  | <b>\$12,605</b>    |
| Fire Loss - 2013                                | <b>\$137,003</b> | <b>\$137,003</b>   |
| Percentage Increase/Decrease 2013 to 2014       | -90.8%           | -90.8%             |

\*Mutual & Automatic Aid Received: 6 calls

\*Mutual & Automatic Aid Given: 6 calls

# Southern Manatee Fire & Rescue

## Operations Division

### Monthly Shift Activities Report

Month: January 2014

Shift: A - B - C

Battalion Chiefs: Gould Blanco Smith

#### TOTAL RUNS FOR YOUR SHIFT:

| A-shift | B-shift | C-shift | <u>Total</u> |
|---------|---------|---------|--------------|
| 133     | 123     | 158     | 414          |

#### HYDRANTS:

|                |     |     |    |     |
|----------------|-----|-----|----|-----|
| Flowed         | 116 | 111 | 98 | 325 |
| Painted        | 17  | 5   | 9  | 31  |
| Retested       | 0   | 0   | 0  | 0   |
| Markers Placed | 15  | 15  | 8  | 38  |

#### TACTICAL SURVEYS:

|         |   |   |   |   |
|---------|---|---|---|---|
| New     | 1 | 1 | 0 | 2 |
| Revised | 1 | 1 | 0 | 2 |

#### INSPECTIONS:

|                  |   |   |   |   |
|------------------|---|---|---|---|
| Initials         | 0 | 0 | 0 | 0 |
| Vacant/No Access | 0 | 0 | 0 | 0 |
| Follow-ups       | 0 | 0 | 0 | 0 |
| Completed        | 0 | 0 | 0 | 0 |

#### FIRE ALARM SYTEM TEST:

|   |   |   |   |
|---|---|---|---|
| 0 | 0 | 0 | 0 |
|---|---|---|---|

#### FIRE SPRINKLER TEST:

|   |   |   |   |
|---|---|---|---|
| 0 | 0 | 0 | 0 |
|---|---|---|---|

#### FIRE ALARM FOLLOW-UPS:

|   |   |   |    |
|---|---|---|----|
| 4 | 6 | 5 | 15 |
|---|---|---|----|

#### PUB ED PROGRAMS:

|   |   |   |   |
|---|---|---|---|
| 0 | 0 | 1 | 1 |
|---|---|---|---|

#### SMOKE DETECTORS INSTALLED:

|    |   |   |    |
|----|---|---|----|
| 10 | 0 | 1 | 11 |
|----|---|---|----|

#### EMPLOYEE EVALUATIONS:

|   |   |   |   |
|---|---|---|---|
| 0 | 0 | 0 | 0 |
|---|---|---|---|

#### SKILL EVALUATIONS:

|   |   |   |   |
|---|---|---|---|
| 0 | 0 | 0 | 0 |
|---|---|---|---|

**RIDER/DRIVER CERT:**

0 0 0 0

**RIDER / DRIVER CERTS**

**Date                      Name                      Type                      Unit**

**SKILL EVALUATIONS**

**Date                      Name                      Test**

**EMPLOYEE EVALUATIONS**

**Date                      Name**

**SPECIAL PROJECTS / ASSIGNMENTS**

| <b><u>Name</u></b> | <b><u>Project</u></b>  | <b><u>Hours</u></b> |
|--------------------|------------------------|---------------------|
| Ely                | Foam                   | 2                   |
| Ely                | Hosebed covers         | 2                   |
| Ranney             | Support Trailer        | 2                   |
| Gibson             | Flags                  | 1                   |
| Sperko             | Fitness                | 5                   |
| Ryder              | Apparatus Maintenance  | 15                  |
| Hauck              | Run Reports            | 8                   |
| Burnett            | Safety Committee       | 1                   |
| D'Agostino         | Uniforms               | 10                  |
| B. Hodges          | Gound Ladders          | 0                   |
| Reisdorf           | Gated Intakes          | 1                   |
| Daughtrey          | No Smokes              | 0                   |
| Naples             | Radios                 | 4                   |
| McKeaver           | Extracators            | 2.5                 |
| Eldridge           | Extinguishers          | 4                   |
| Peirce             | Med Supplies           | 5                   |
| Snider             | Group Fitness          | 3                   |
| Thayer             | EMT Modules            | 10                  |
| Thayer             | AED Program            | 8                   |
| Ryder              | Company Inspections    | 2.5                 |
| Naples             | Company Inspections    | 4.5                 |
| Grote              | Company Inspections    | 2.5                 |
| Thayer             | Company Inspections    | 3                   |
| D'Agostino         | Company Inspections    | 3                   |
| Hollins            | Group Fitness          | 3                   |
| Hollins            | Sewing                 | 2                   |
| Garcia             | Water Rescue           | 1                   |
| Garcia             | Car Seat Program       | 5                   |
| Tumolo             | SCBA masks             | 6                   |
| Bloski             | MCHIT Training Officer | 40                  |
| Morgan             | SCBA                   | 4                   |
| Morgan             | Thermal                | 1                   |
| Anderson           | Hydrants               | 10                  |

|             |                          |     |
|-------------|--------------------------|-----|
| Keusch      | Report Writing           | 10  |
| Keusch      | Weight Equipment         | 2   |
| Kaliher     | Tacticals                | 10  |
| Pratt       | Hydrant Tags             | 2   |
| Wojcik      | Haz Mat Suits            | 10  |
| Sigfrid     | Saws                     | 4   |
| Bonds       | FTO                      | 25  |
| Bonds       | Flow Equipment           | 8   |
| Weissman    | Hurst Equipment          | 10  |
| Mc Ginley   | Fuel logs                | 3   |
| Mc Ginley   | Vol Association          | 3   |
| Ramer       | Air chisels              | 1   |
| Questionati | Detection                | 5   |
| Pietsch     | Fans                     | 2   |
| Carpenter   | Tool Boxes               | 1   |
| Bennett     | Cones & Vests            | 1   |
| Hodges      | Lock out kits            | 2   |
| Saxman      | Cascade Unit             | 1   |
| Chevalier   | Sara Title III           | 1   |
| Collins     | Librarian                | 1   |
| Hylwa       | Nozzles                  | 1   |
| Connor      | End of Month Report      | 5   |
| Connor      | End of Year Report       | 19  |
| Connor      | Accountability           | 1.5 |
| Connor      | Company Inspections      | 1.5 |
| White       | Flashlights              | 1   |
| Godden      | Hose                     | 5   |
| Foss        | Run Reports              | 10  |
| Lambert     | Inventory                | 5   |
| Lambert     | Rope rescue              | 2   |
| Lambert     | Apparatus spec committee | 4   |
| Gatanis     | Website                  | 5   |
| Burton      | Safety Gear              | 12  |
| Burton      | Company Inspections      | 1   |
| Perry       | FTO                      | 15  |
| Duquette    | Fitness Coordinator      | 1   |
| Dehart      | Cribbing                 | 1   |

**Public Education Programs**

| <b><u>Date</u></b> | <b><u>Program</u></b> | <b><u>Location</u></b> | <b><u># of people</u></b> |
|--------------------|-----------------------|------------------------|---------------------------|
| 1/28/2014          | Truck show            | Station 3              | 16                        |

**Smoke Detector Installations**

| <b><u>Date</u></b> | <b><u>Address</u></b>      | <b><u>Blitz</u></b> | <b><u>On call</u></b> | <b><u>FPB Request</u></b> |
|--------------------|----------------------------|---------------------|-----------------------|---------------------------|
| 1/18/2014          | 108 52 Ave Dr E            |                     | 1                     |                           |
| 1/31/2014          | 6845 Superior St Cir E     |                     | 1                     |                           |
| 1/11/2014          | 916 61 Avenue Terrace East |                     | 4                     |                           |
| 1/11/2014          | 918 61 Avenue Terrace East |                     | 4                     |                           |
| 1/17/2014          | 2020 45 Street Court East  |                     | 2                     |                           |



**Fire Alarm and Sprinkler Tests**

| <b><u>Date</u></b> | <b><u>Address</u></b> | <b><u>Fire Alarm</u></b> | <b><u>Sprinkler</u></b> |
|--------------------|-----------------------|--------------------------|-------------------------|
|--------------------|-----------------------|--------------------------|-------------------------|

**Fire Drills**

| <b><u>Date</u></b> | <b><u>OIC</u></b> | <b><u>Hours</u></b> | <b><u>School</u></b> |
|--------------------|-------------------|---------------------|----------------------|
|--------------------|-------------------|---------------------|----------------------|

**Fire Alarm Follow up**

| <b><u>Date</u></b> | <b><u>Address</u></b>    | <b><u>Hours</u></b> | <b><u>Completed Y/N</u></b> |
|--------------------|--------------------------|---------------------|-----------------------------|
| 1/6/2014           | 2303 1 St E              | 0.25                | Y                           |
| 1/15/2014          | 202 13 Ave E (Run# 1534) | 0.25                | Y                           |
| 1/15/2014          | 202 13 Ave E (Run# 1686) | 0.25                | Y                           |
| 1/15/2014          | 8315 Lockwood Ridge      | 0.25                | N                           |
| 1/27/2014          | 8212 Tourist Center Dr   | 0.25                | N                           |
| 1/3/2014           | 715 Whitfield Ave        | 0.25                | N                           |
| 1/13/2014          | 7911 25 Ct E             | 0.5                 | Y                           |
| 1/13/2014          | 8384 Lockwood Ridge Rd   | 0.5                 | Y                           |
| 1/16/2014          | 8315 Lockwood Ridge Rd   | 0.5                 | N                           |
| 1/28/2014          | 4950 Peridia Blvd        | 0.5                 | Y                           |
| 1/13/2014          | 8009 15 St E             | 0.5                 | N                           |
| 1/2/2014           | 2020 26 Ave E            | 0.5                 | Y                           |
| 1/14/2014          | 8121 25 Ct. E            | 0.5                 | Y                           |
| 1/11/2014          | 5700 24 Street East      | 0.5                 | N                           |
| 1/29/2014          | 4950 Peridia Blvd. East  | 0.5                 | N                           |

# Comparison of Yearly Calls by Station and Month

## YEARLY CALLS BY MONTH - 2014

|              | Station 1  | Station 2  | Station 3 | Station 4 | Station 5 | Monthly            | YTD Total |
|--------------|------------|------------|-----------|-----------|-----------|--------------------|-----------|
| January      | 151        | 107        | 63        | 45        | 50        | 416                | 416       |
| February     |            |            |           |           |           |                    |           |
| March        |            |            |           |           |           |                    |           |
| April        |            |            |           |           |           |                    |           |
| May          |            |            |           |           |           |                    |           |
| June         |            |            |           |           |           |                    |           |
| July         |            |            |           |           |           |                    |           |
| August       |            |            |           |           |           |                    |           |
| September    |            |            |           |           |           |                    |           |
| October      |            |            |           |           |           |                    |           |
| November     |            |            |           |           |           |                    |           |
| December     |            |            |           |           |           |                    |           |
|              |            |            |           |           |           | <b>Grand Total</b> |           |
| <b>Total</b> | <b>151</b> | <b>107</b> | <b>63</b> | <b>45</b> | <b>50</b> | <b>416</b>         |           |

## YEARLY CALLS BY MONTH - 2013

|              | Station 1   | Station 2   | Station 3  | Station 4  | Station 5  | Monthly            | YTD Total |
|--------------|-------------|-------------|------------|------------|------------|--------------------|-----------|
| January      | 155         | 102         | 61         | 50         | 41         | 409                | 409       |
| February     | 141         | 91          | 62         | 47         | 39         | 380                | 789       |
| March        | 170         | 92          | 55         | 61         | 30         | 408                | 1197      |
| April        | 151         | 90          | 63         | 50         | 33         | 387                | 1584      |
| May          | 136         | 88          | 49         | 58         | 36         | 367                | 1951      |
| June         | 154         | 101         | 55         | 45         | 38         | 393                | 2344      |
| July         | 132         | 75          | 55         | 49         | 30         | 341                | 2685      |
| August       | 153         | 97          | 51         | 55         | 29         | 385                | 3070      |
| September    | 117         | 105         | 56         | 48         | 41         | 367                | 3437      |
| October      | 148         | 103         | 60         | 54         | 33         | 398                | 3835      |
| November     | 116         | 92          | 55         | 60         | 35         | 358                | 4193      |
| December     | 121         | 97          | 59         | 55         | 35         | 367                | 4560      |
|              |             |             |            |            |            | <b>Grand Total</b> |           |
| <b>Total</b> | <b>1694</b> | <b>1133</b> | <b>681</b> | <b>632</b> | <b>420</b> | <b>4560</b>        |           |